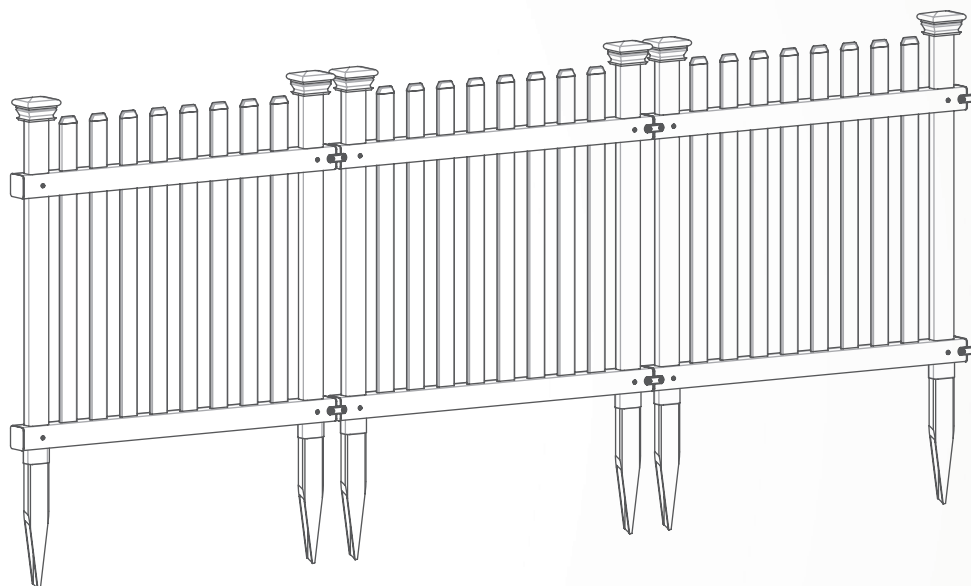




# ZIPPITY

*Easy Does It!*



**ROGER RABBIT**  
VINYL GARDEN FENCE  
3-PACK  
(24"W X 24"H)



**ASSEMBLY**  
INSTRUCTIONS  
ZP19056



**30 MIN**

*Approximate assembly time for 3 fence panels*



Want to see a video on how to  
assemble this product?

**Scan the QR code**

## GENERAL INFORMATION



### IMPORTANT

- Check the inside of the larger pieces in your box for other materials packed inside.
- When assembling components, place on a non-abrasive surface (i.e. shipping box) to avoid scratching.
- We recommend an area approximately 5'x 8' for unobstructed assembling.
- You should not need to use excessive force when assembling components.

## MISSING OR DAMAGED PARTS?

### VISIT OUR WEBSITE FIRST, SO WE CAN HELP YOU RIGHT AWAY!

Although great care has been taken to ensure proper packaging and handling of this product, occasionally problems occur. If you discover any missing, damaged or defective parts, please visit our website to order replacement parts. If you experience any further trouble with your product, please contact our customer service department.

 [parts.nychbrands.com](http://parts.nychbrands.com)

 [support@zippity-outdoor.com](mailto:support@zippity-outdoor.com)

 **704-892-5222 / 877-234-6196**

*Customer service agents are available to take calls weekdays from 8am-5pm EST. If you call outside of business hours, please leave a voicemail.*

To help you quickly and accurately, please have reference item number **ZP19056** and the specific part name which can be found on page 4. It is helpful if you can provide the batch lot which is a stamped number on the end of the box.

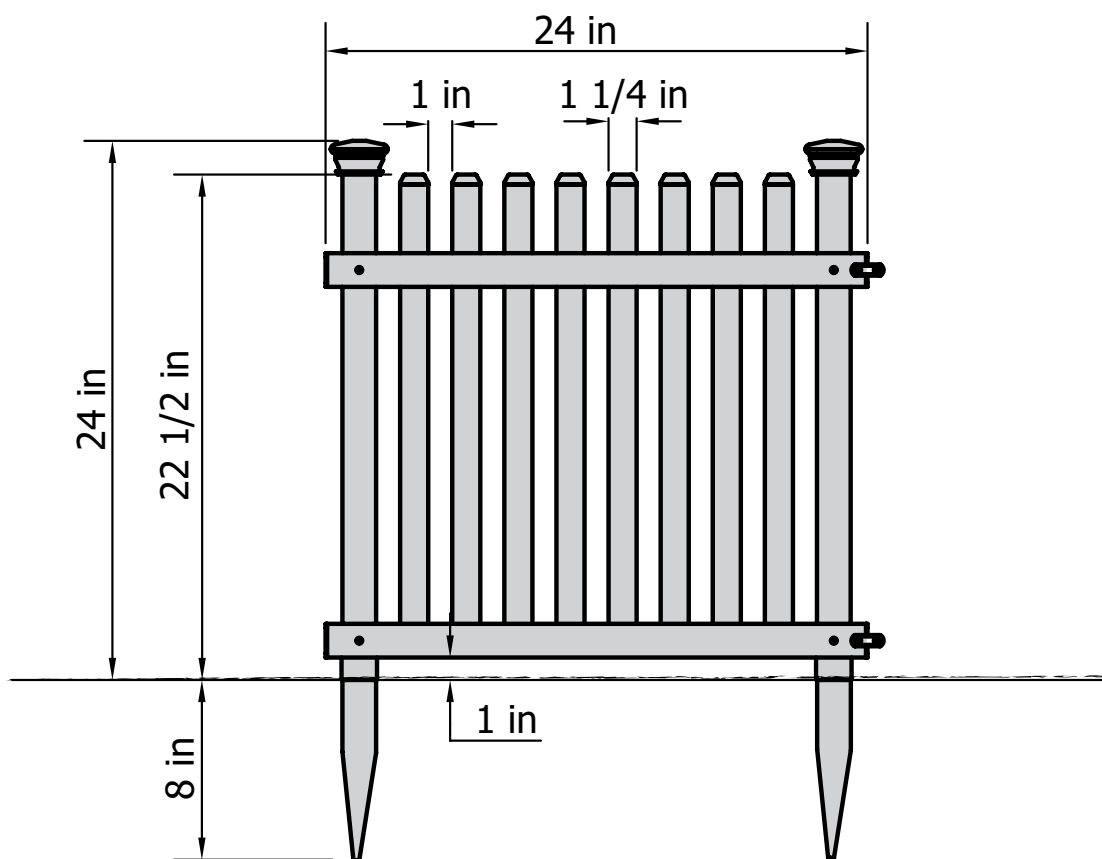
## NEED ASSEMBLY HELP?

If you are having problems with the assembly or installation of this product, we are happy to assist you with the process, **so please give us a call at 704-892-5222 / 877-234-6196.**

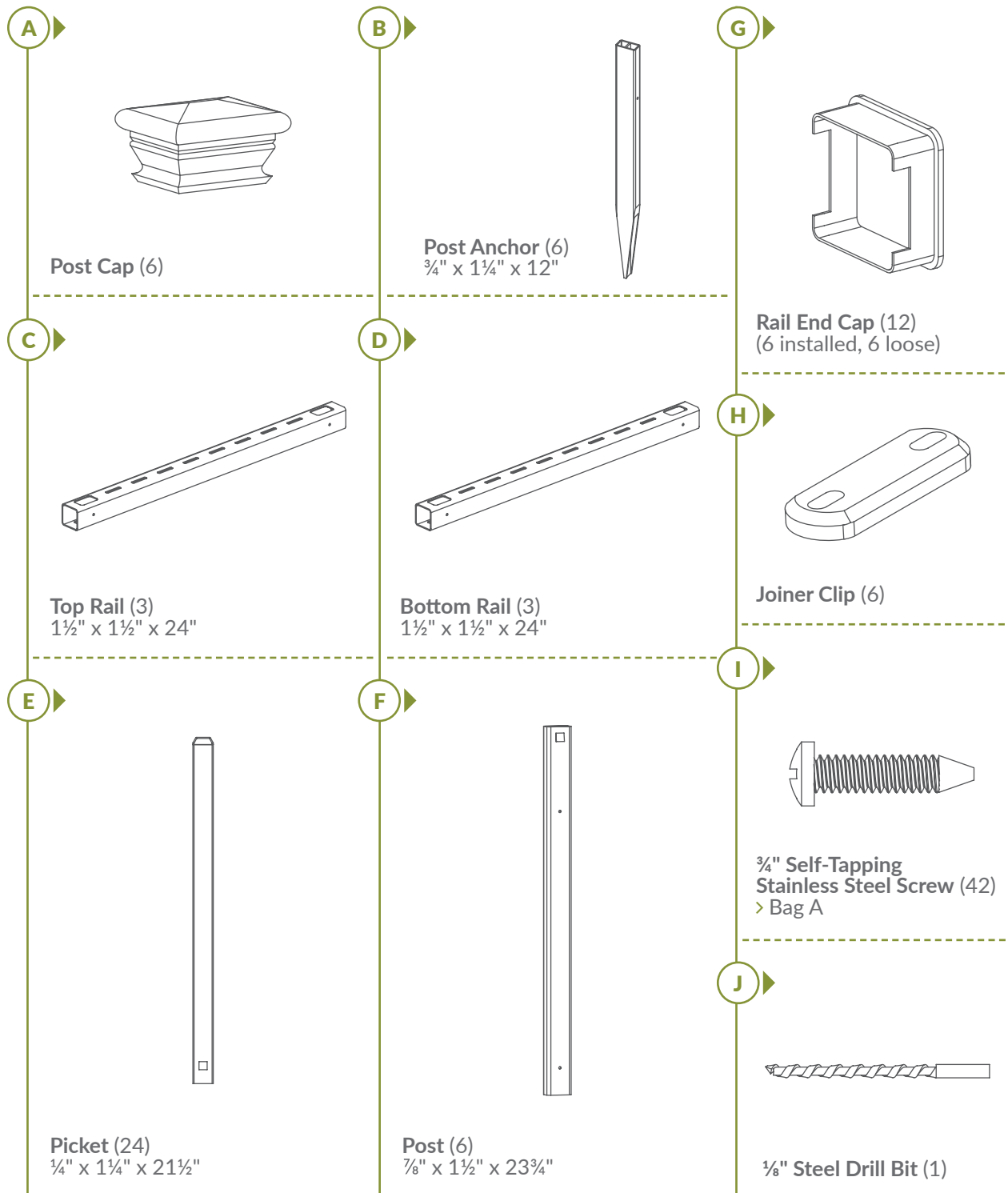
## NEED TO RETURN?

If for some reason you need to return this product, please allow us to help resolve your issues first. If you still decide to return the product, **you will need to initiate the return from the company you originally purchased from.**

## Detailed Product Dimensions & Specifications



## STEP 1: LAY OUT MATERIALS

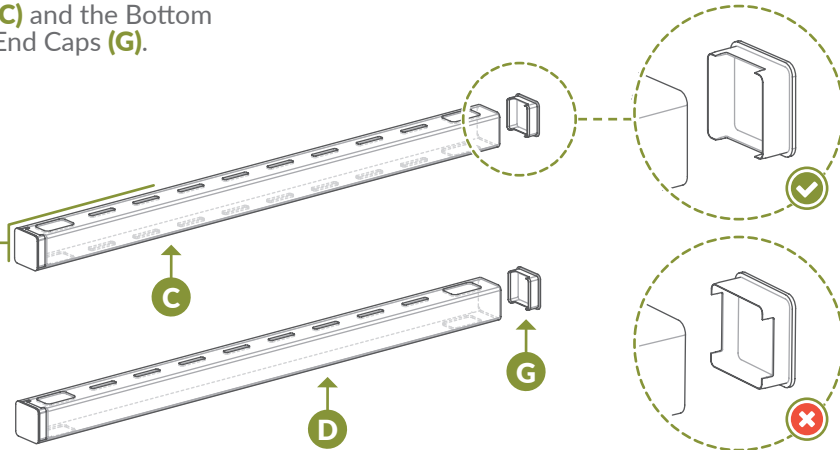


## STEP 2: ASSEMBLE FENCE FRAME

### STEP 2.1 ▶

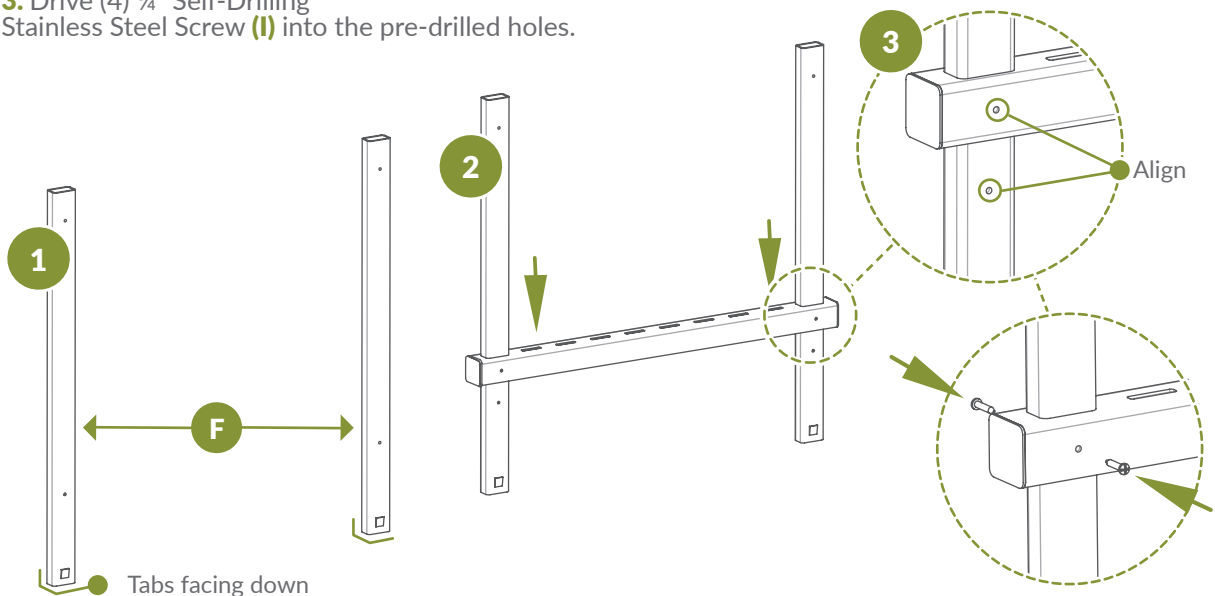
- ▶ Identify the Top Rail (**C**) and the Bottom Rail (**D**). Insert (2) Rail End Caps (**G**).

**Note:**  
Top rail can be identified by the picket holes in both sides of the rail.



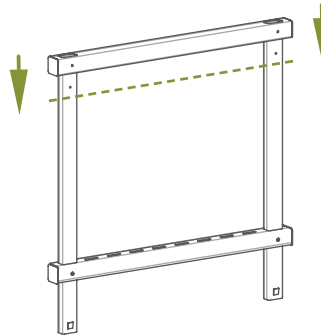
### STEP 2.2 ▶

1. Position (2) Posts (**F**) as shown.
2. Slide top rail over posts and align pre-drilled holes.
3. Drive (4) 3/4" Self-Drilling Stainless Steel Screw (**I**) into the pre-drilled holes.

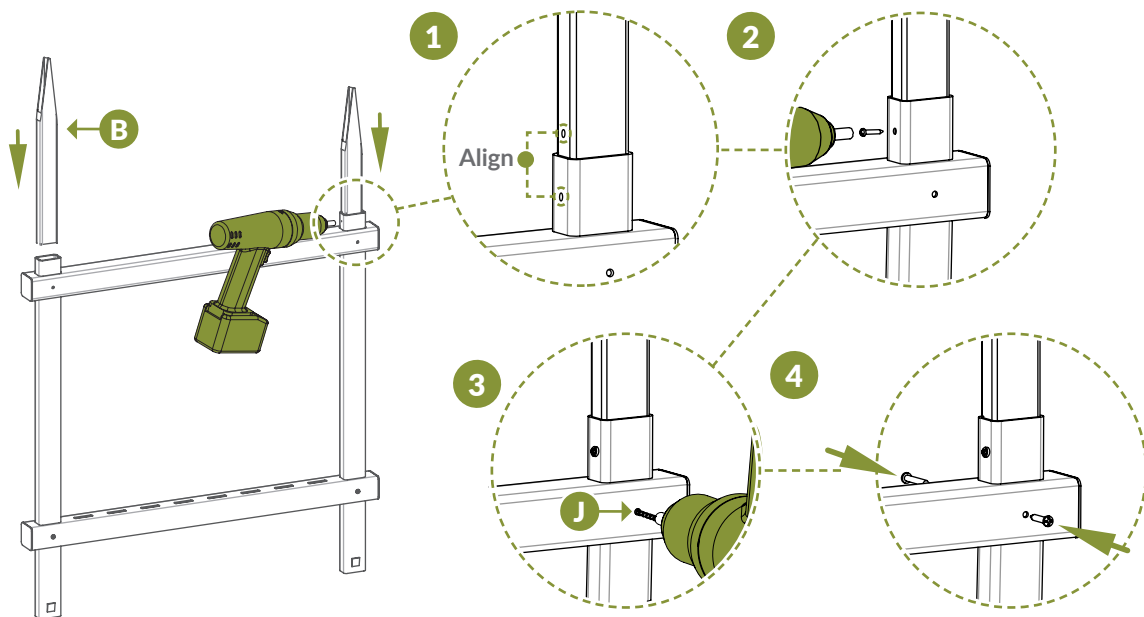


**STEP 2.3** ▶

▶ Slide bottom rail over the posts and align the pre-drilled holes in the posts with the pre-drilled holes in the bottom rail.

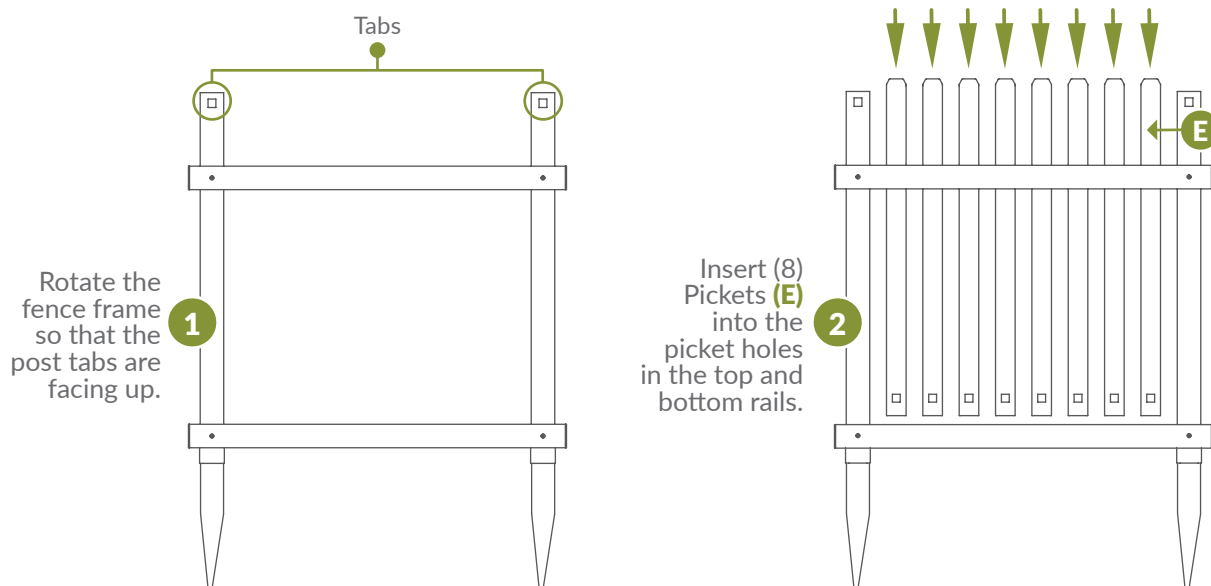
**STEP 2.4** ▶

1. Slide bottom rail over the posts and align the pre-drilled holes in the posts with the pre-drilled holes in the bottom rail.
2. Slide the Post Anchors (B) 4" into the bottom of the posts. 8" of the post anchor should be visible beyond the bottom of the posts.
3. Use the 1/8" Drill Bit (J) to drill (4) total holes in the post anchor through the pre-drilled holes in the bottom rail.
4. Fasten together through the pre-drilled holes in the bottom rail with (4) 3/4" self-drilling stainless steel screws.



## STEP 3: INSERT THE PICKETS

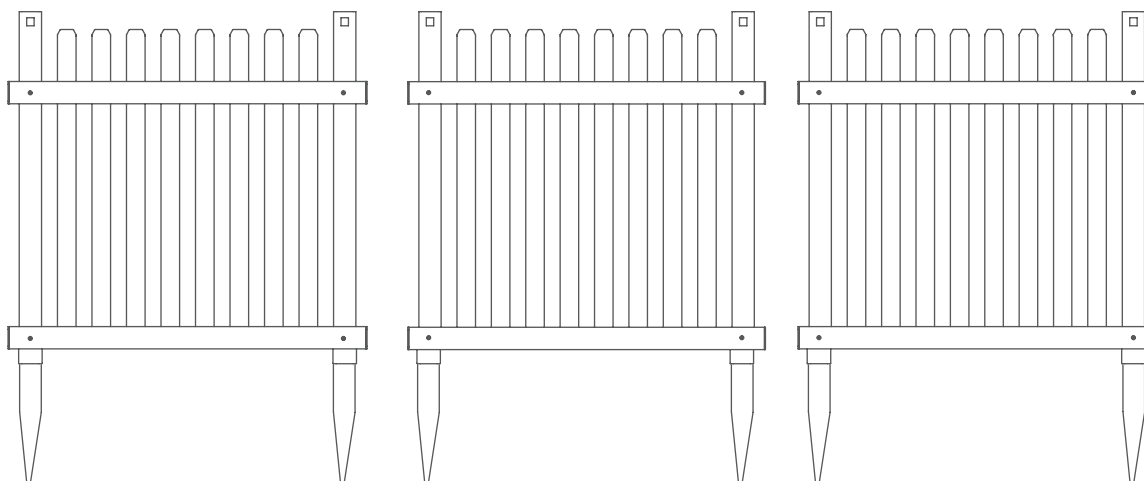
### STEP 3.1 ▶



## STEP 4: ASSEMBLE ADDITIONAL PANELS

### STEP 4.1 ▶

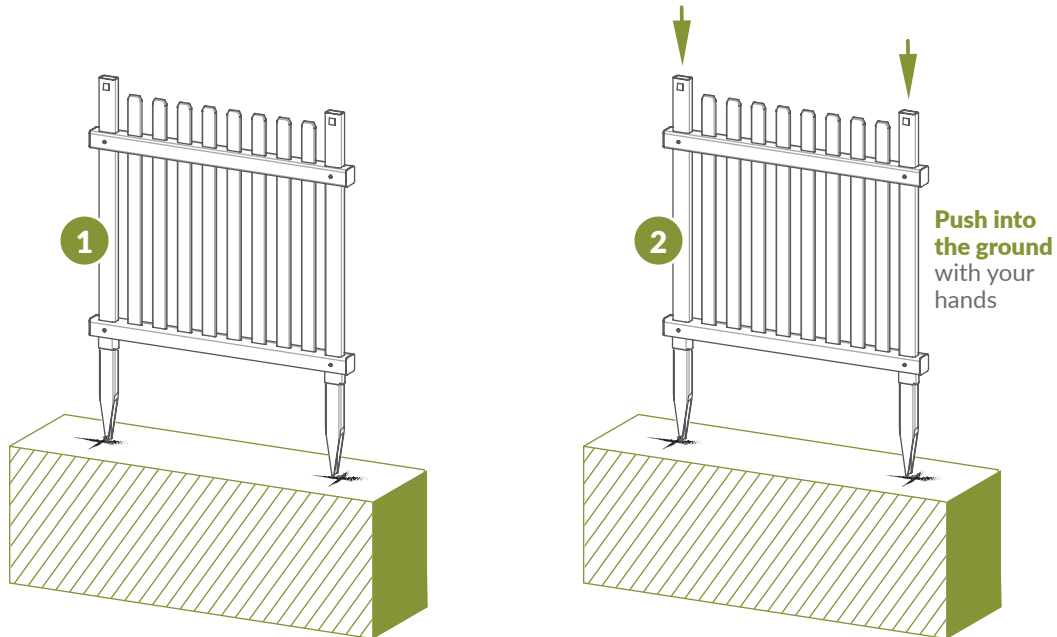
- ▶ Repeat Steps 1-3 to assemble the other two fence panels.



## STEP 5: INSTALL FENCE INTO GROUND

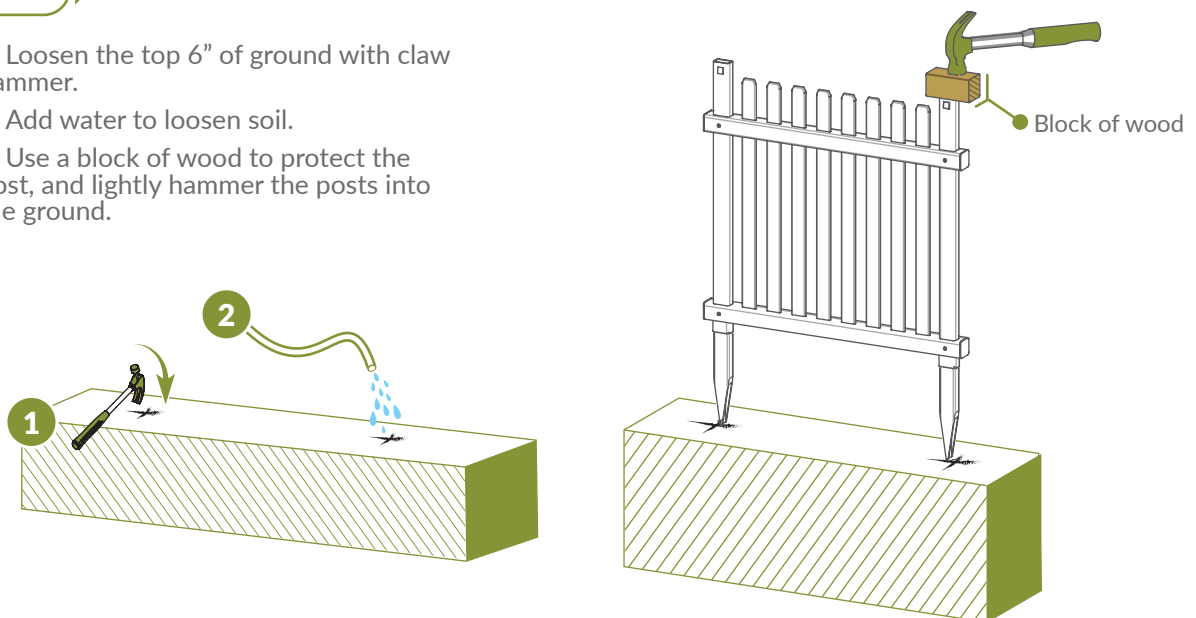
### STEP 5.1 ▶

1. Move the fence panel to its final location, and mark the location of the posts.
2. Attempt to push fence panel into the ground until the post anchors are entirely in the ground.



### STEP 5.2 ▶

1. Loosen the top 6" of ground with claw hammer.
2. Add water to loosen soil.
3. Use a block of wood to protect the post, and lightly hammer the posts into the ground.

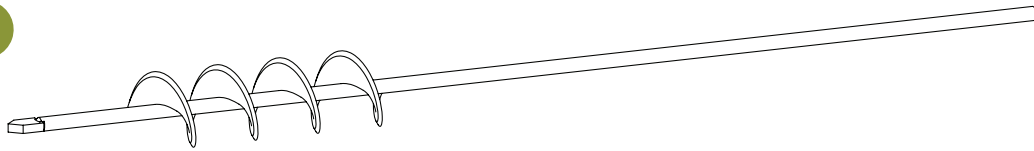
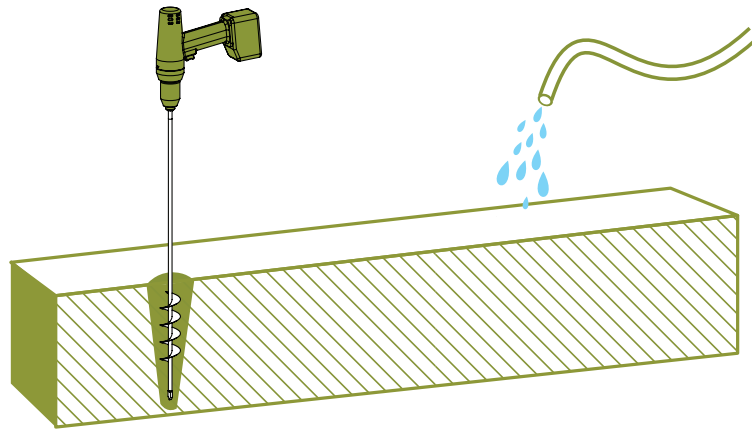
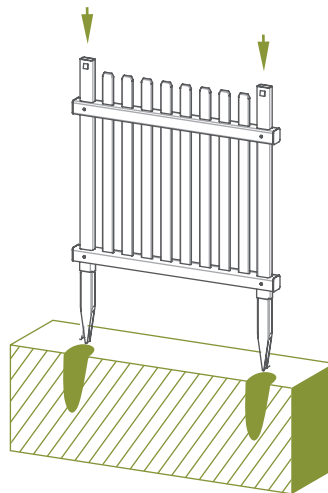




**STEP 5.3** ▶

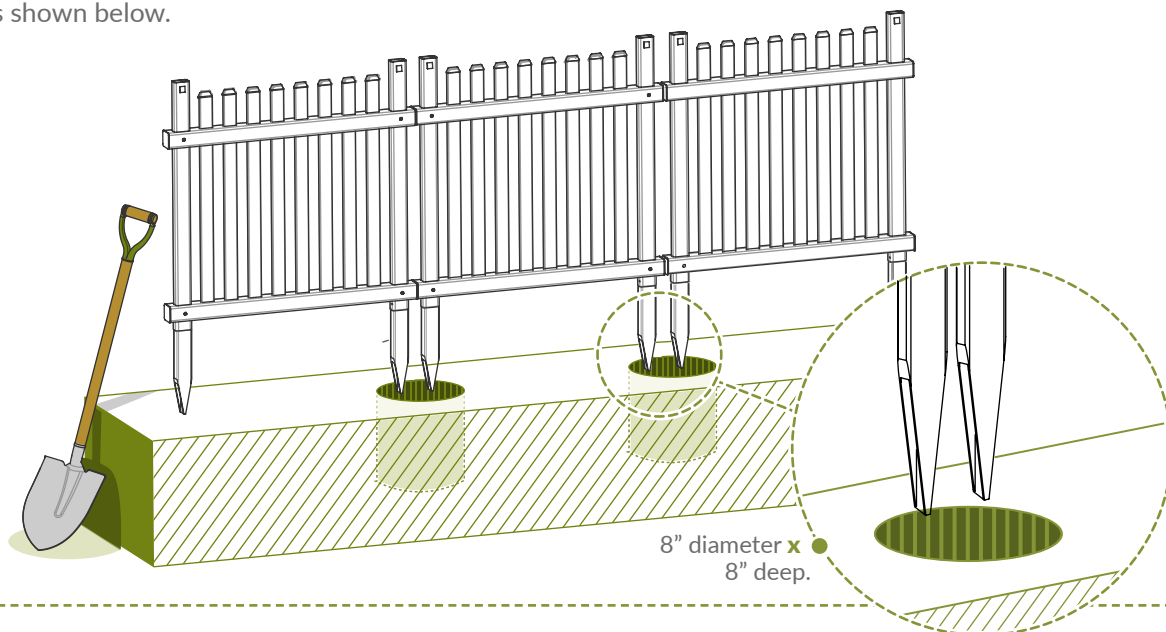
► **Optional in hard ground:** If your ground is too hard, or you have more than 3 or 4 panels to install, please consider these options:

1. Use a 1¼" diameter auger bit (commonly used for planting tulips) as illustrated (\$15-\$20 on Amazon.com).
2. Drill a hole about 12" to 16" deep at the desired location, and fill the holes with water as illustrated.
3. Push the fence posts into the holes.

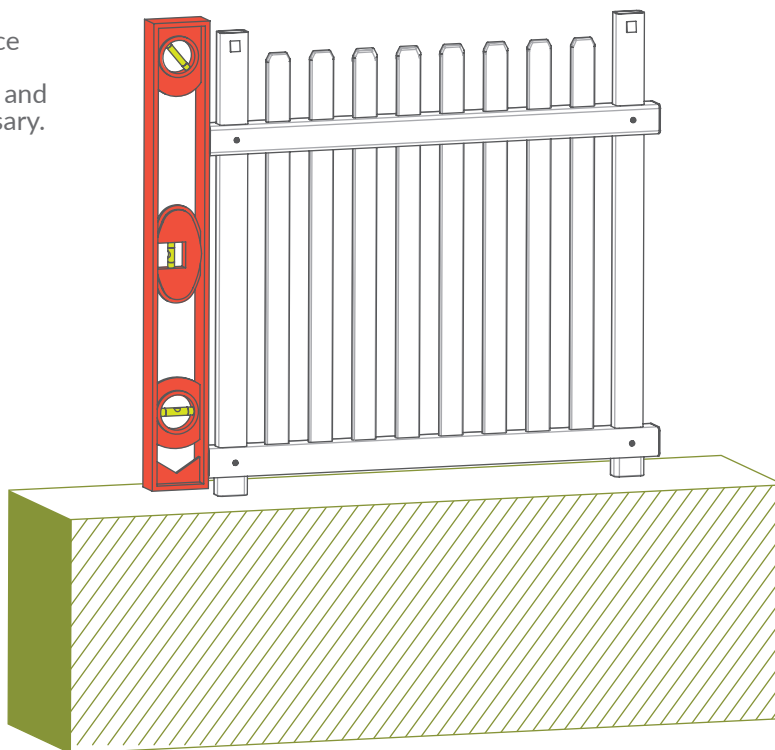
**1****2****3**

**STEP 5.4** ▶

▶ If ground is too hard, dig two 8" diameter 8" deep holes to accommodate two posts each as shown below.

**STEP 5.5** ▶

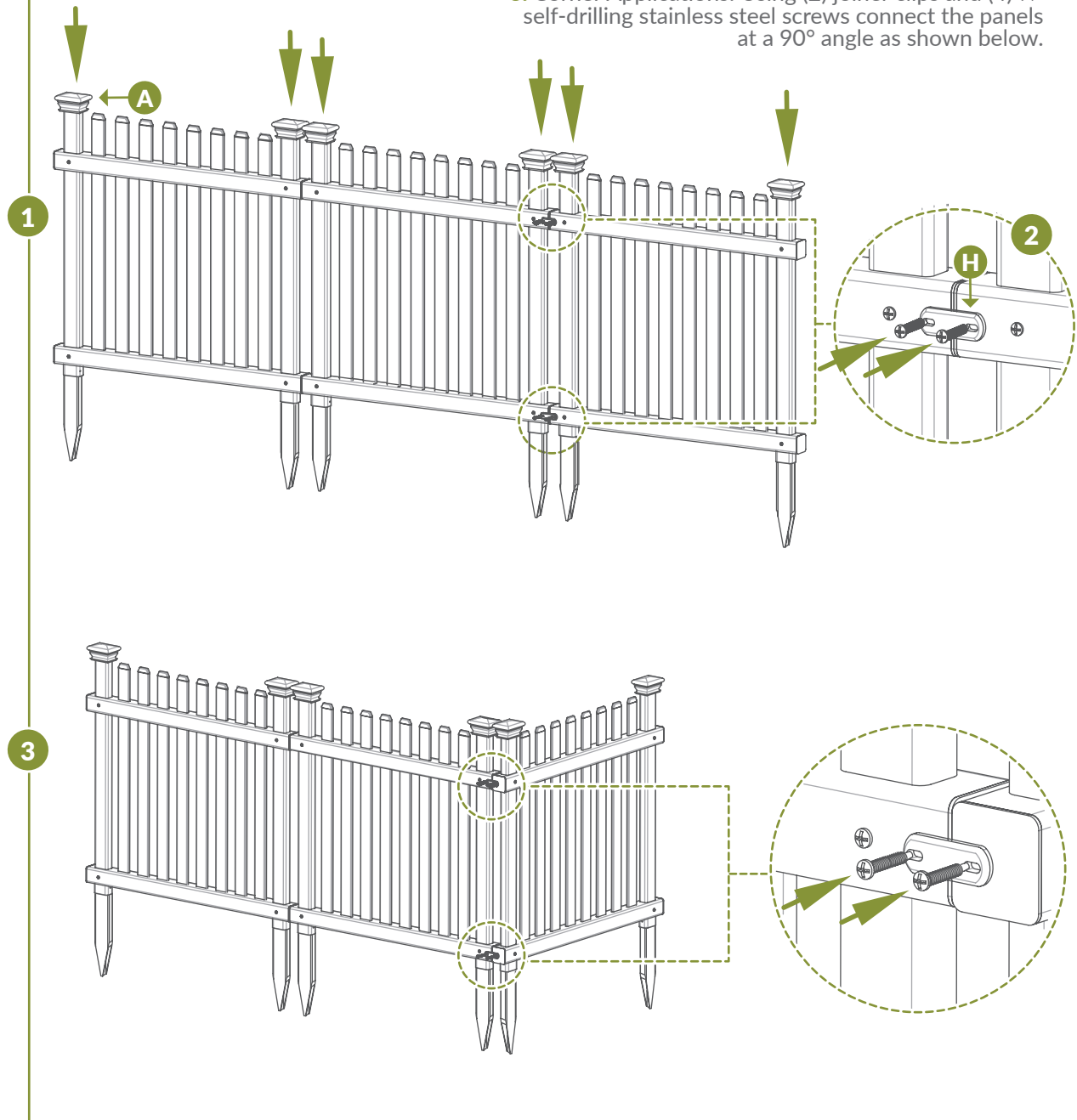
▶ Level the fence panel, backfill excavated dirt, and tamp as necessary.



## STEP 6: INSTALL POST CAPS AND CONNECT PANELS

### STEP 6.1 ▶

1. Push the Post Caps (A) down over the posts to lock into place.
2. Straight Line Applications: Using (2) Joiner Clips (H) and (4)  $\frac{3}{4}$ " self-drilling stainless steel screws, connect the panels as shown below.
3. Corner Applications: Using (2) joiner clips and (4)  $\frac{3}{4}$ " self-drilling stainless steel screws connect the panels at a 90° angle as shown below.





# ZIPPITY

*Easy Does It!*



6935 Reames Rd. Ste. K.  
Charlotte, NC 28216



[support@zippity-outdoor.com](mailto:support@zippity-outdoor.com)

704-892-5222  
877-234-6196



[WWW.ZIPPITY-OUTDOOR.COM](http://WWW.ZIPPITY-OUTDOOR.COM)